

Category of Work

Detailed floor plans, sections, elevations, etc. of the building proposed for construction on the site of the proposed building on L.R. NO. 158, 159, 160, 161, 162, 163, 164, 165, 166, 167, 168, 169, 170, 171, 172, 173, 174, 175, 176, 177, 178, 179, 180, 181, 182, 183, 184, 185, 186, 187, 188, 189, 190, 191, 192, 193, 194, 195, 196, 197, 198, 199, 200, 201, 202, 203, 204, 205, 206, 207, 208, 209, 210, 211, 212, 213, 214, 215, 216, 217, 218, 219, 220, 221, 222, 223, 224, 225, 226, 227, 228, 229, 230, 231, 232, 233, 234, 235, 236, 237, 238, 239, 240, 241, 242, 243, 244, 245, 246, 247, 248, 249, 250, 251, 252, 253, 254, 255, 256, 257, 258, 259, 260, 261, 262, 263, 264, 265, 266, 267, 268, 269, 270, 271, 272, 273, 274, 275, 276, 277, 278, 279, 280, 281, 282, 283, 284, 285, 286, 287, 288, 289, 290, 291, 292, 293, 294, 295, 296, 297, 298, 299, 300, 301, 302, 303, 304, 305, 306, 307, 308, 309, 310, 311, 312, 313, 314, 315, 316, 317, 318, 319, 320, 321, 322, 323, 324, 325, 326, 327, 328, 329, 330, 331, 332, 333, 334, 335, 336, 337, 338, 339, 340, 341, 342, 343, 344, 345, 346, 347, 348, 349, 350, 351, 352, 353, 354, 355, 356, 357, 358, 359, 360, 361, 362, 363, 364, 365, 366, 367, 368, 369, 370, 371, 372, 373, 374, 375, 376, 377, 378, 379, 380, 381, 382, 383, 384, 385, 386, 387, 388, 389, 390, 391, 392, 393, 394, 395, 396, 397, 398, 399, 400, 401, 402, 403, 404, 405, 406, 407, 408, 409, 410, 411, 412, 413, 414, 415, 416, 417, 418, 419, 420, 421, 422, 423, 424, 425, 426, 427, 428, 429, 430, 431, 432, 433, 434, 435, 436, 437, 438, 439, 440, 441, 442, 443, 444, 445, 446, 447, 448, 449, 450, 451, 452, 453, 454, 455, 456, 457, 458, 459, 460, 461, 462, 463, 464, 465, 466, 467, 468, 469, 470, 471, 472, 473, 474, 475, 476, 477, 478, 479, 480, 481, 482, 483, 484, 485, 486, 487, 488, 489, 490, 491, 492, 493, 494, 495, 496, 497, 498, 499, 500, 501, 502, 503, 504, 505, 506, 507, 508, 509, 510, 511, 512, 513, 514, 515, 516, 517, 518, 519, 520, 521, 522, 523, 524, 525, 526, 527, 528, 529, 530, 531, 532, 533, 534, 535, 536, 537, 538, 539, 540, 541, 542, 543, 544, 545, 546, 547, 548, 549, 550, 551, 552, 553, 554, 555, 556, 557, 558, 559, 560, 561, 562, 563, 564, 565, 566, 567, 568, 569, 570, 571, 572, 573, 574, 575, 576, 577, 578, 579, 580, 581, 582, 583, 584, 585, 586, 587, 588, 589, 590, 591, 592, 593, 594, 595, 596, 597, 598, 599, 600, 601, 602, 603, 604, 605, 606, 607, 608, 609, 610, 611, 612, 613, 614, 615, 616, 617, 618, 619, 620, 621, 622, 623, 624, 625, 626, 627, 628, 629, 630, 631, 632, 633, 634, 635, 636, 637, 638, 639, 640, 641, 642, 643, 644, 645, 646, 647, 648, 649, 650, 651, 652, 653, 654, 655, 656, 657, 658, 659, 660, 661, 662, 663, 664, 665, 666, 667, 668, 669, 670, 671, 672, 673, 674, 675, 676, 677, 678, 679, 680, 681, 682, 683, 684, 685, 686, 687, 688, 689, 690, 691, 692, 693, 694, 695, 696, 697, 698, 699, 700, 701, 702, 703, 704, 705, 706, 707, 708, 709, 710, 711, 712, 713, 714, 715, 716, 717, 718, 719, 720, 721, 722, 723, 724, 725, 726, 727, 728, 729, 730, 731, 732, 733, 734, 735, 736, 737, 738, 739, 740, 741, 742, 743, 744, 745, 746, 747, 748, 749, 750, 751, 752, 753, 754, 755, 756, 757, 758, 759, 760, 761, 762, 763, 764, 765, 766, 767, 768, 769, 770, 771, 772, 773, 774, 775, 776, 777, 778, 779, 780, 781, 782, 783, 784, 785, 786, 787, 788, 789, 790, 791, 792, 793, 794, 795, 796, 797, 798, 799, 800, 801, 802, 803, 804, 805, 806, 807, 808, 809, 810, 811, 812, 813, 814, 815, 816, 817, 818, 819, 820, 821, 822, 823, 824, 825, 826, 827, 828, 829, 830, 831, 832, 833, 834, 835, 836, 837, 838, 839, 840, 841, 842, 843, 844, 845, 846, 847, 848, 849, 850, 851, 852, 853, 854, 855, 856, 857, 858, 859, 860, 861, 862, 863, 864, 865, 866, 867, 868, 869, 870, 871, 872, 873, 874, 875, 876, 877, 878, 879, 880, 881, 882, 883, 884, 885, 886, 887, 888, 889, 890, 891, 892, 893, 894, 895, 896, 897, 898, 899, 900, 901, 902, 903, 904, 905, 906, 907, 908, 909, 910, 911, 912, 913, 914, 915, 916, 917, 918, 919, 920, 921, 922, 923, 924, 925, 926, 927, 928, 929, 930, 931, 932, 933, 934, 935, 936, 937, 938, 939, 940, 941, 942, 943, 944, 945, 946, 947, 948, 949, 950, 951, 952, 953, 954, 955, 956, 957, 958, 959, 960, 961, 962, 963, 964, 965, 966, 967, 968, 969, 970, 971, 972, 973, 974, 975, 976, 977, 978, 979, 980, 981, 982, 983, 984, 985, 986, 987, 988, 989, 990, 991, 992, 993, 994, 995, 996, 997, 998, 999, 1000.

Overhead Water Reservoir Above Capacity: 2000 LTR.

Overhead Water Reservoir Above Capacity: 2000 LTR.

Overhead Water Reservoir Above Capacity: 2000 LTR.

Overhead Water Reservoir Above Capacity: 2000 LTR.

Overhead Water Reservoir Above Capacity: 2000 LTR.

Overhead Water Reservoir Above Capacity: 2000 LTR.

Overhead Water Reservoir Above Capacity: 2000 LTR.

Overhead Water Reservoir Above Capacity: 2000 LTR.

Overhead Water Reservoir Above Capacity: 2000 LTR.

Overhead Water Reservoir Above Capacity: 2000 LTR.

Overhead Water Reservoir Above Capacity: 2000 LTR.

Overhead Water Reservoir Above Capacity: 2000 LTR.

Overhead Water Reservoir Above Capacity: 2000 LTR.

Overhead Water Reservoir Above Capacity: 2000 LTR.

Overhead Water Reservoir Above Capacity: 2000 LTR.

Overhead Water Reservoir Above Capacity: 2000 LTR.

Overhead Water Reservoir Above Capacity: 2000 LTR.

Overhead Water Reservoir Above Capacity: 2000 LTR.

Overhead Water Reservoir Above Capacity: 2000 LTR.

Overhead Water Reservoir Above Capacity: 2000 LTR.

Overhead Water Reservoir Above Capacity: 2000 LTR.

Overhead Water Reservoir Above Capacity: 2000 LTR.

Overhead Water Reservoir Above Capacity: 2000 LTR.

Overhead Water Reservoir Above Capacity: 2000 LTR.

Overhead Water Reservoir Above Capacity: 2000 LTR.

Overhead Water Reservoir Above Capacity: 2000 LTR.

Overhead Water Reservoir Above Capacity: 2000 LTR.

Overhead Water Reservoir Above Capacity: 2000 LTR.

Overhead Water Reservoir Above Capacity: 2000 LTR.

Overhead Water Reservoir Above Capacity: 2000 LTR.

Overhead Water Reservoir Above Capacity: 2000 LTR.

Overhead Water Reservoir Above Capacity: 2000 LTR.

Overhead Water Reservoir Above Capacity: 2000 LTR.

Overhead Water Reservoir Above Capacity: 2000 LTR.

Overhead Water Reservoir Above Capacity: 2000 LTR.

Overhead Water Reservoir Above Capacity: 2000 LTR.

Overhead Water Reservoir Above Capacity: 2000 LTR.

Overhead Water Reservoir Above Capacity: 2000 LTR.

Overhead Water Reservoir Above Capacity: 2000 LTR.

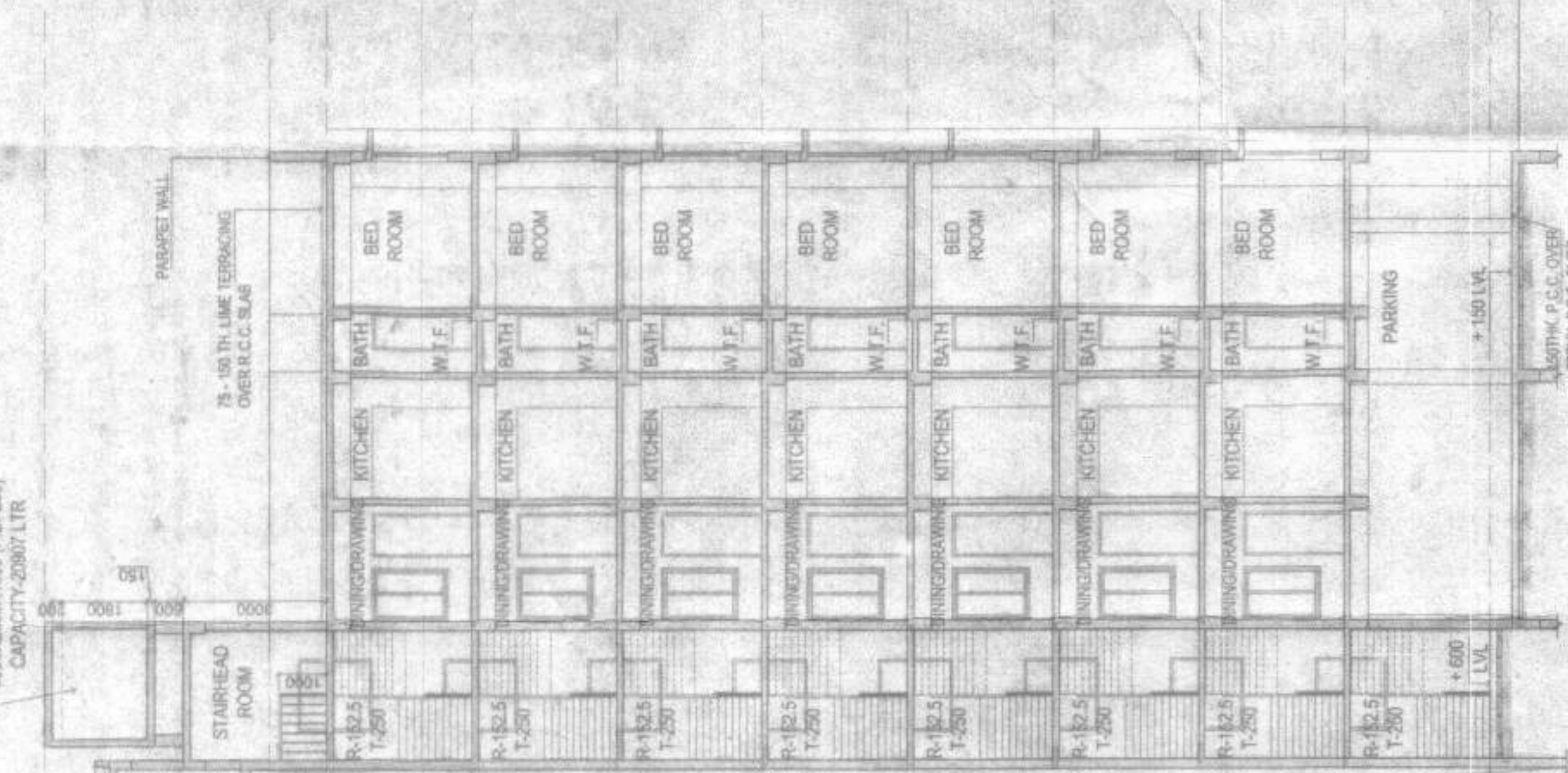
Overhead Water Reservoir Above Capacity: 2000 LTR.

Overhead Water Reservoir Above Capacity: 2000 LTR.

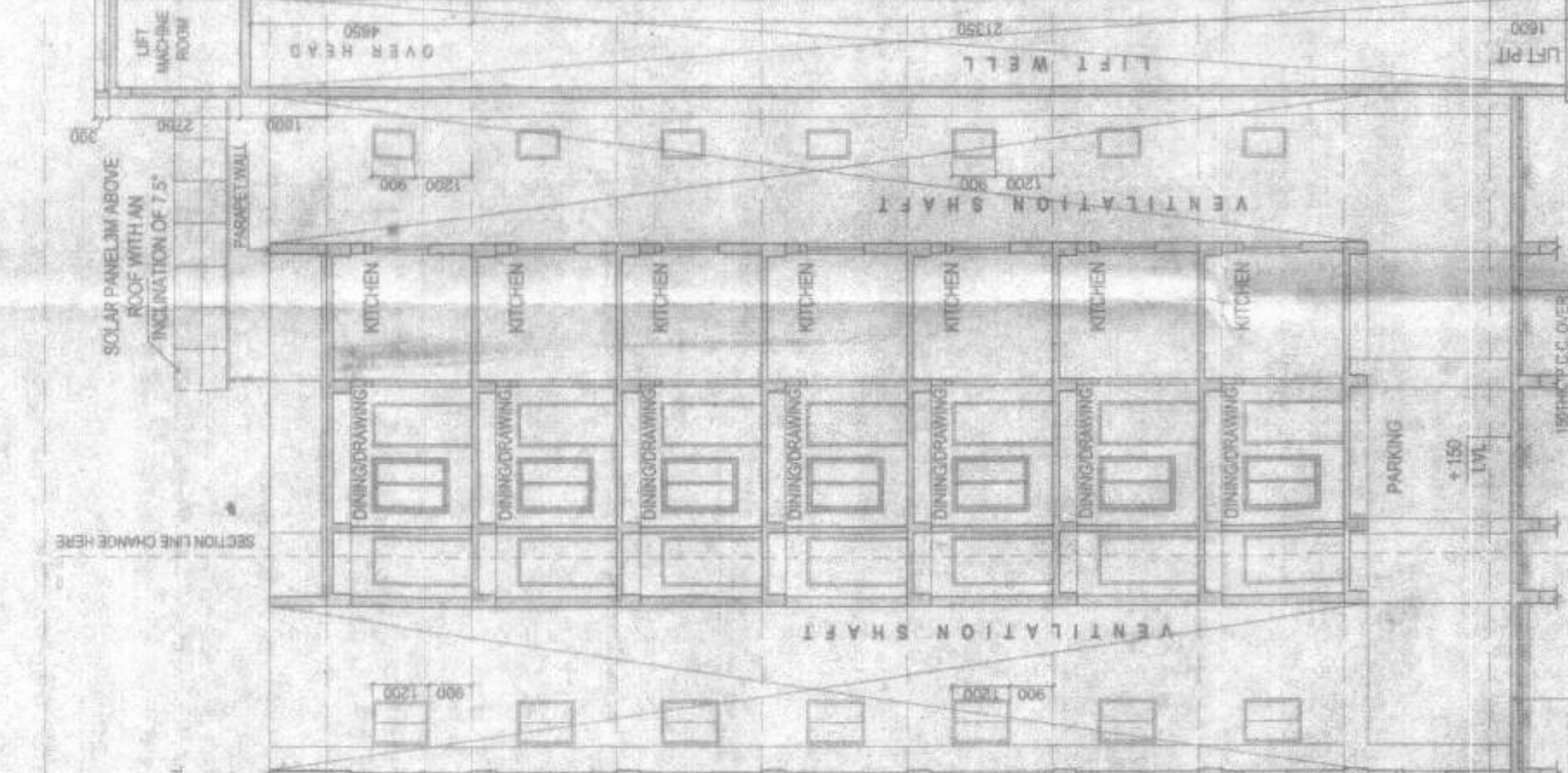
Overhead Water Reservoir Above Capacity: 2000 LTR.

Overhead Water Reservoir Above Capacity: 2000 LTR.

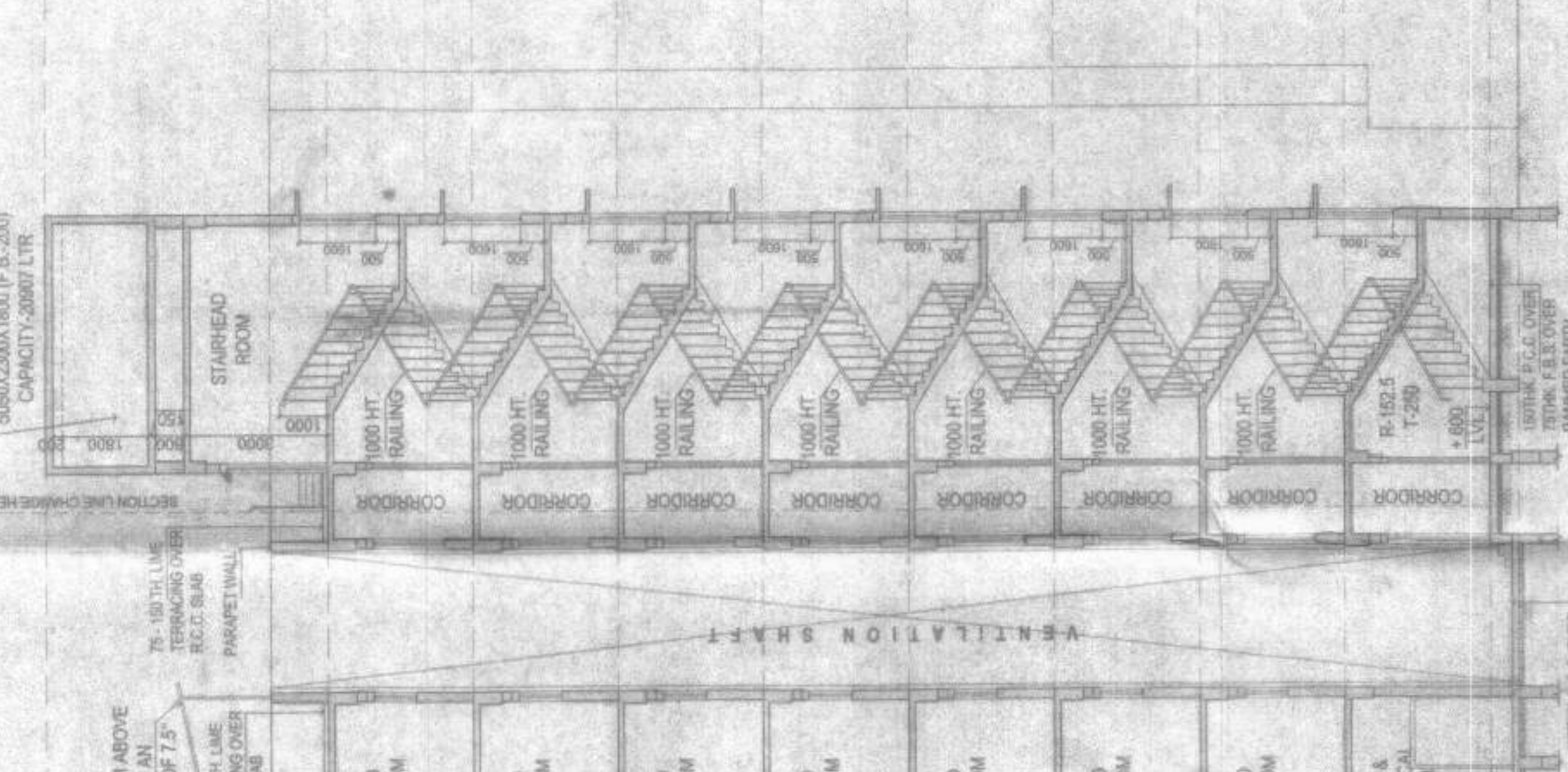
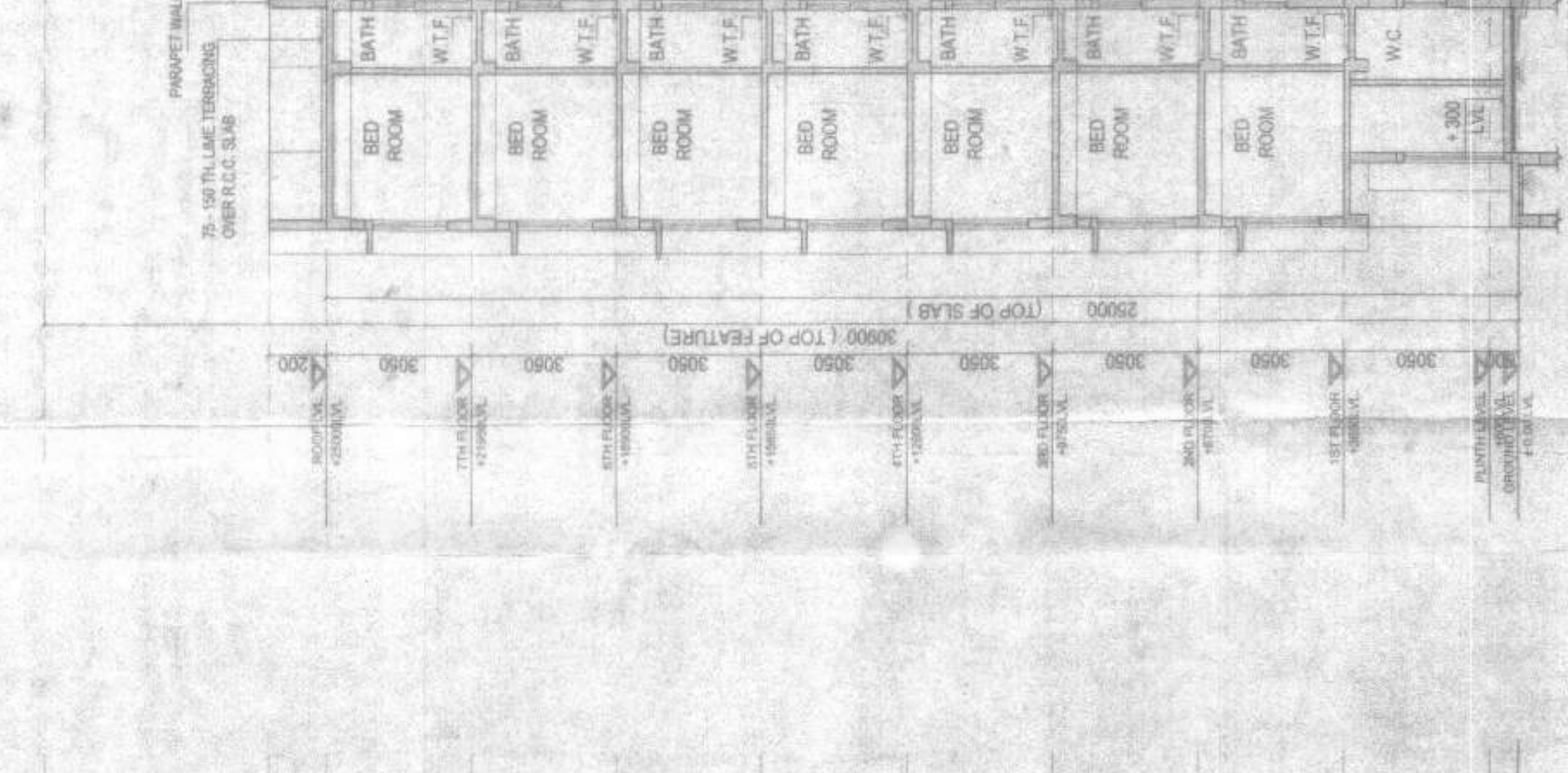
Overhead Water Reservoir Above Capacity: 2000 LTR.



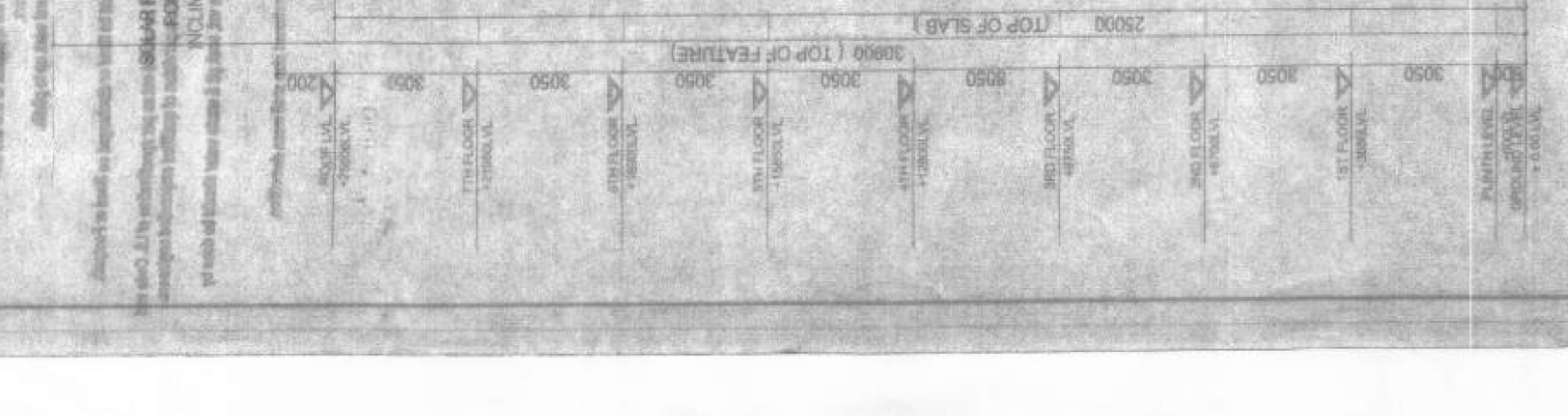
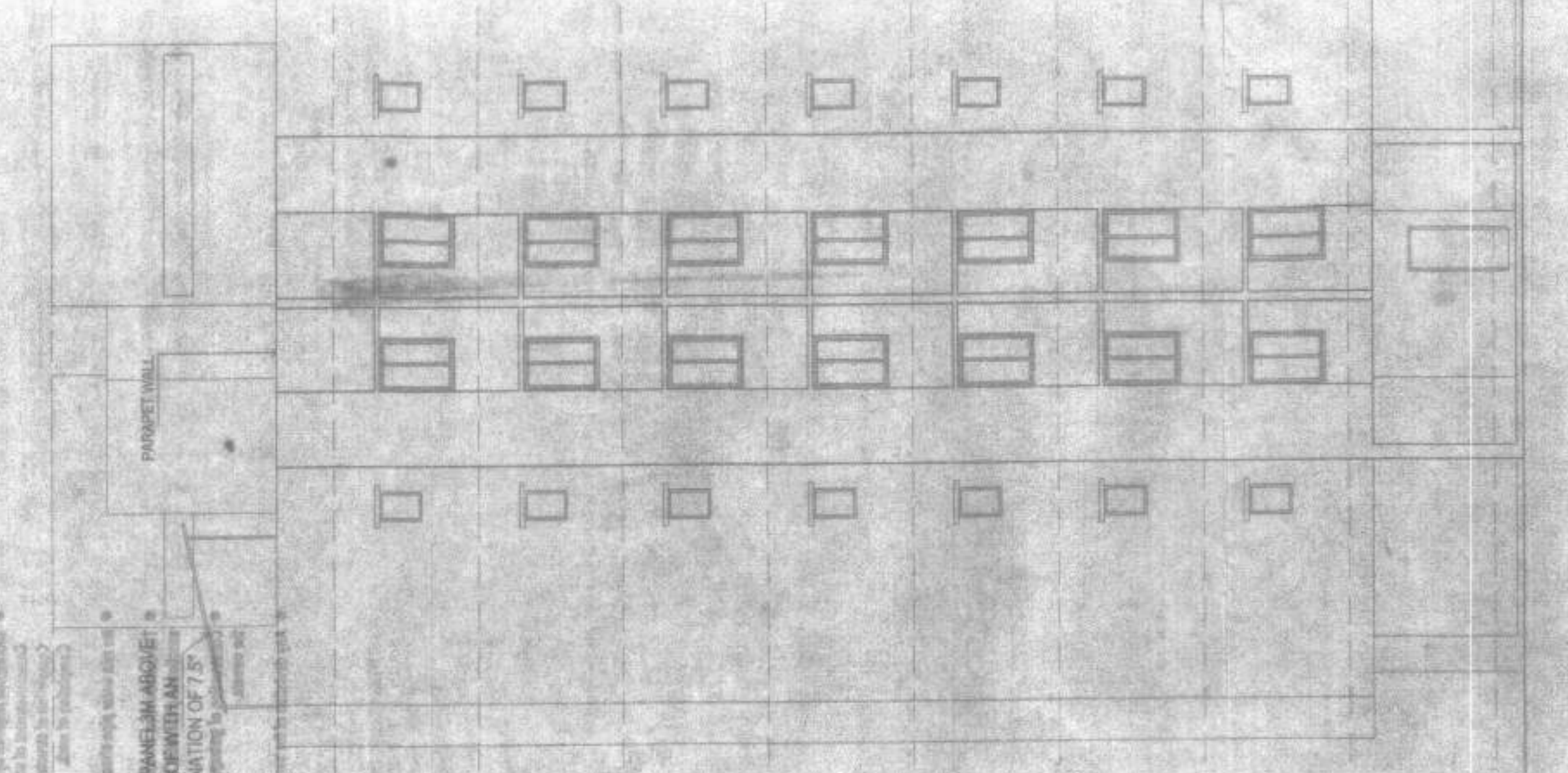
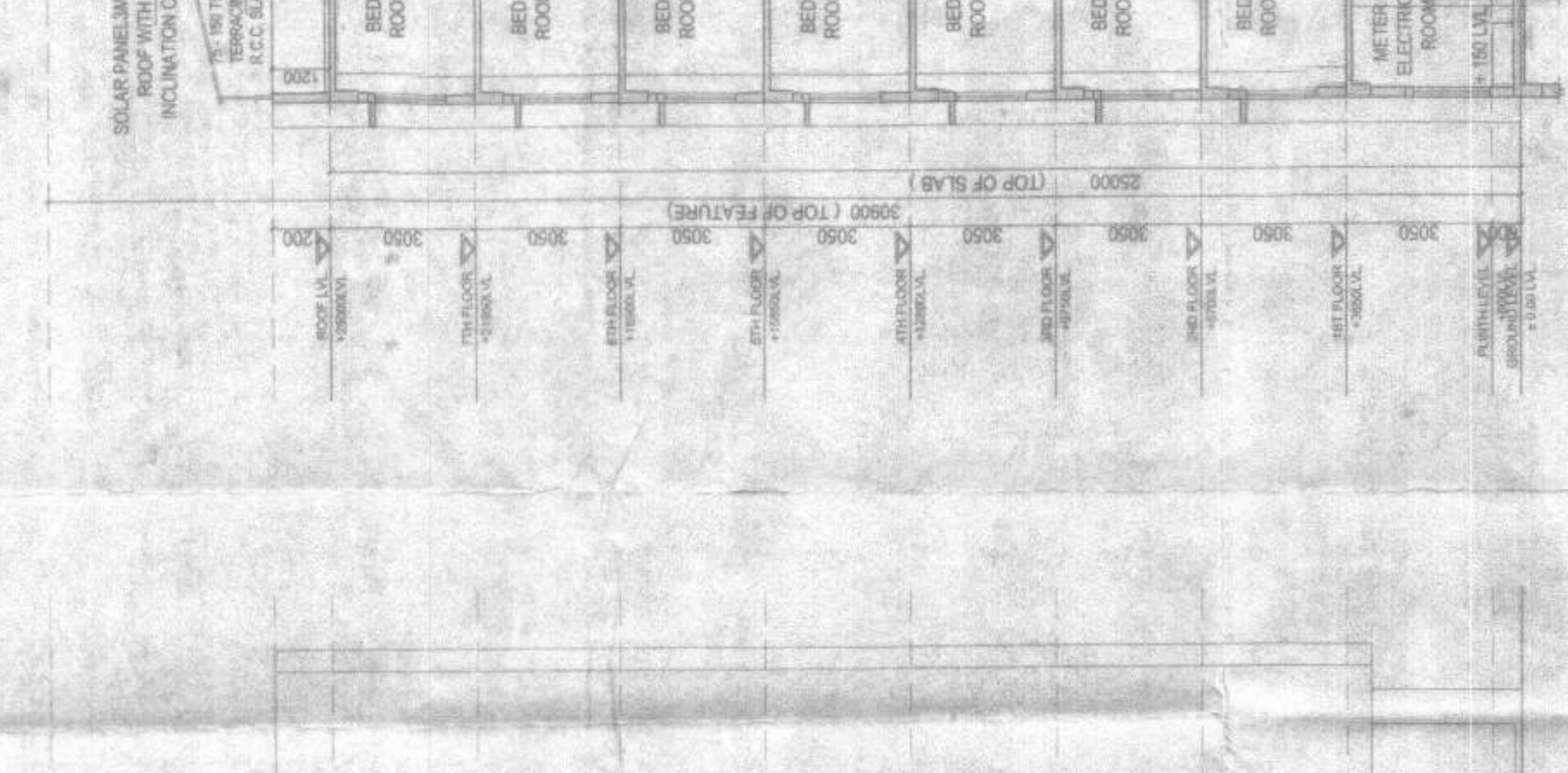
SECTION - AA
SCALE: 1:100



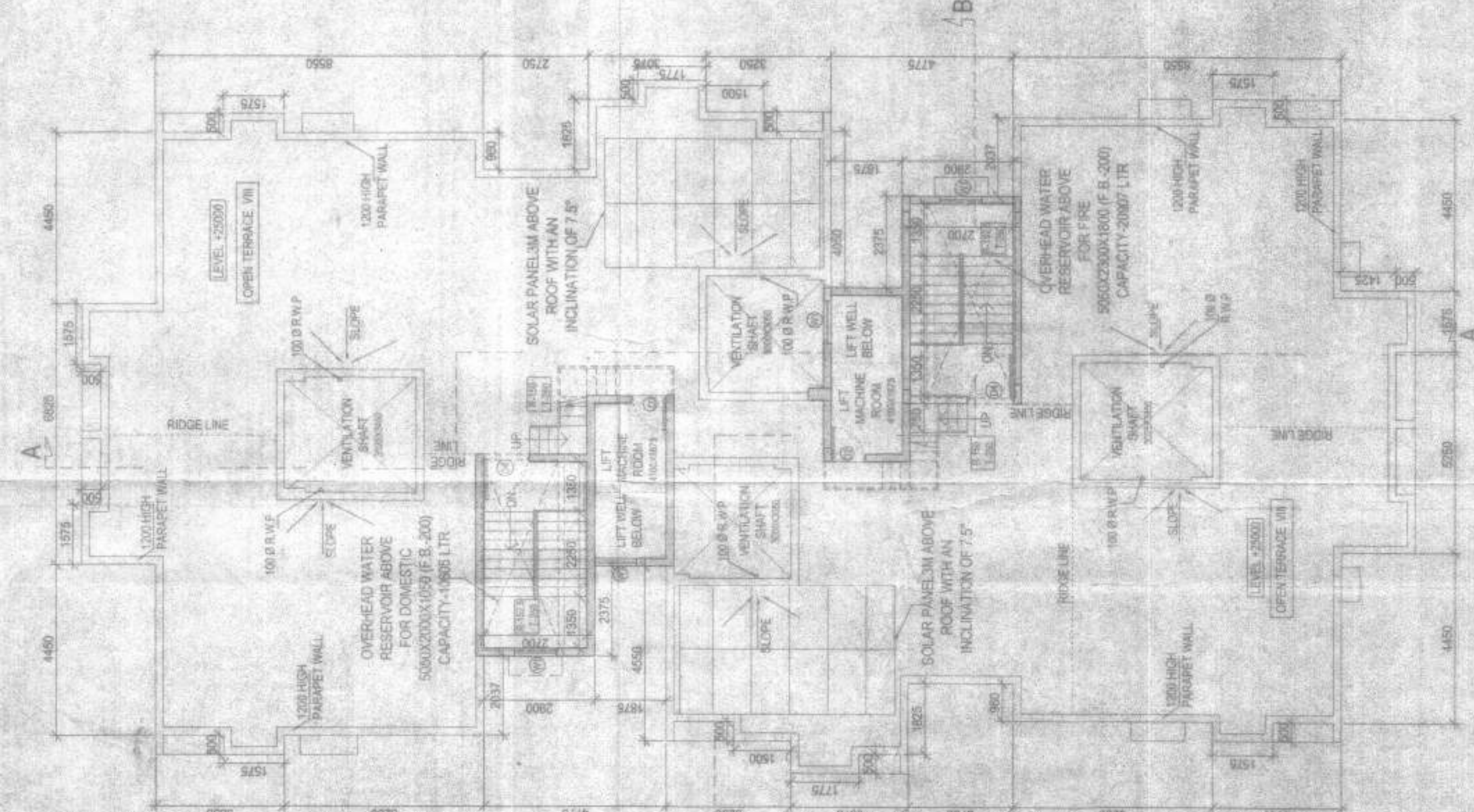
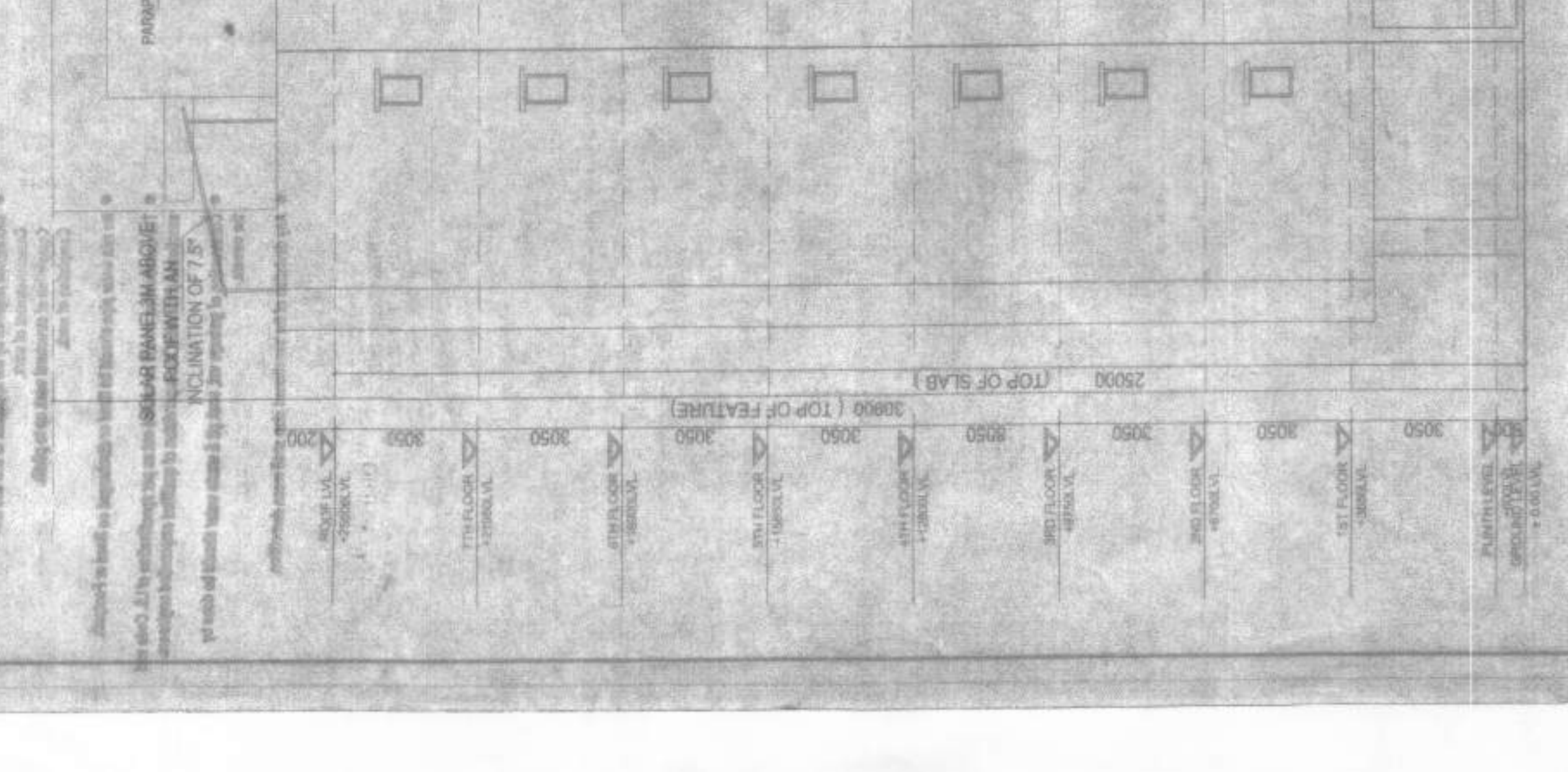
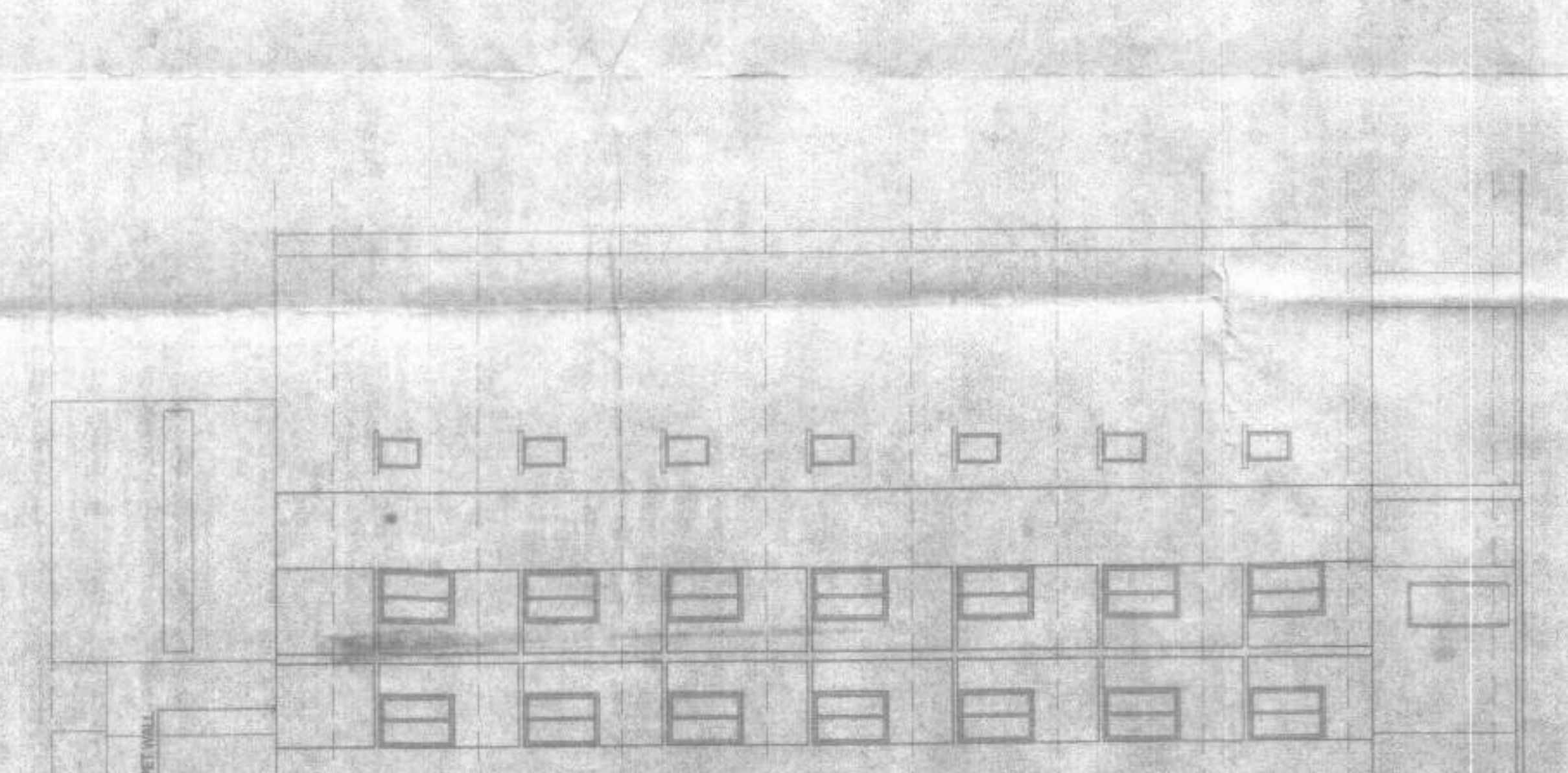
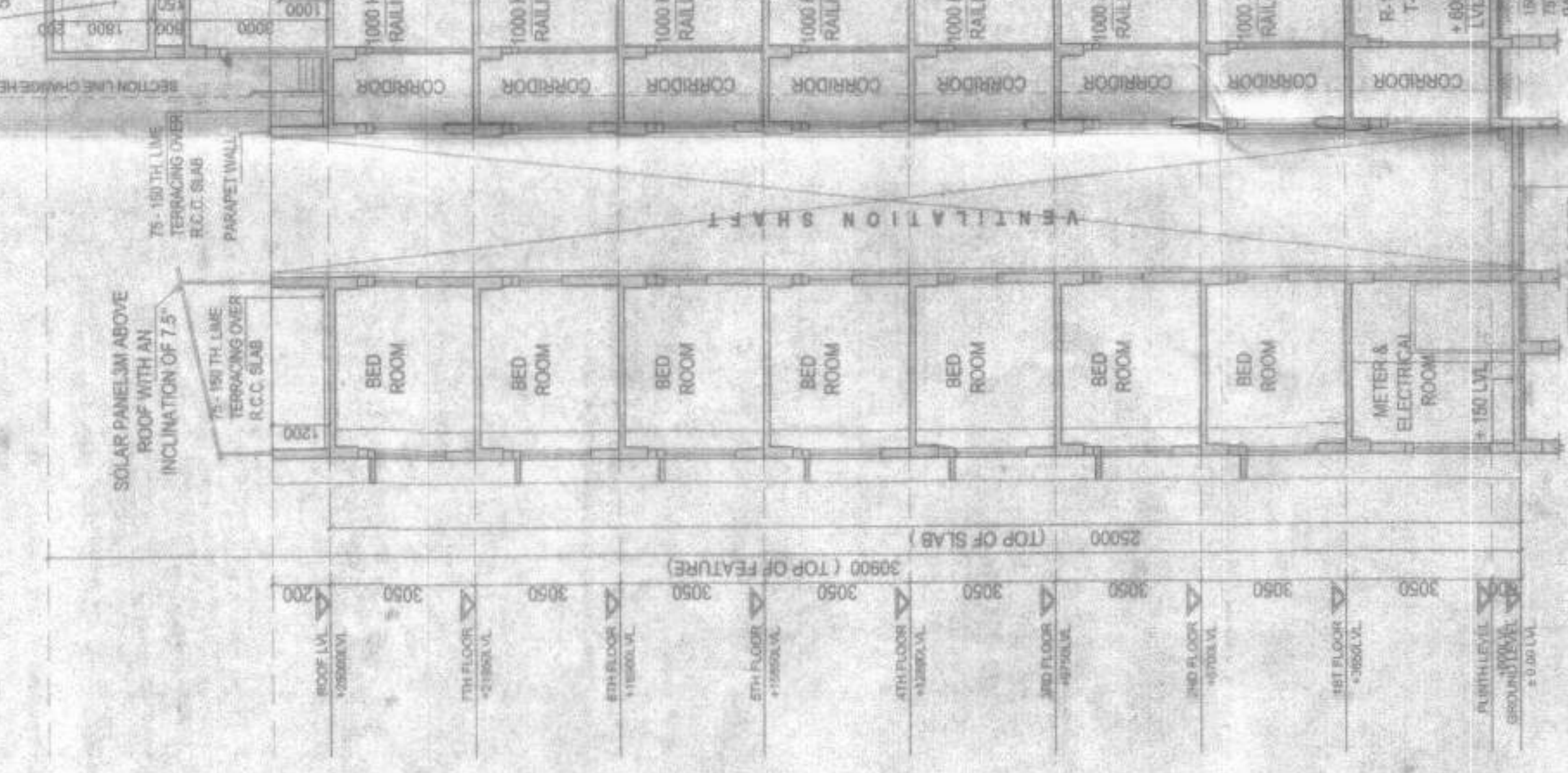
SECTION - BB
SCALE: 1:100



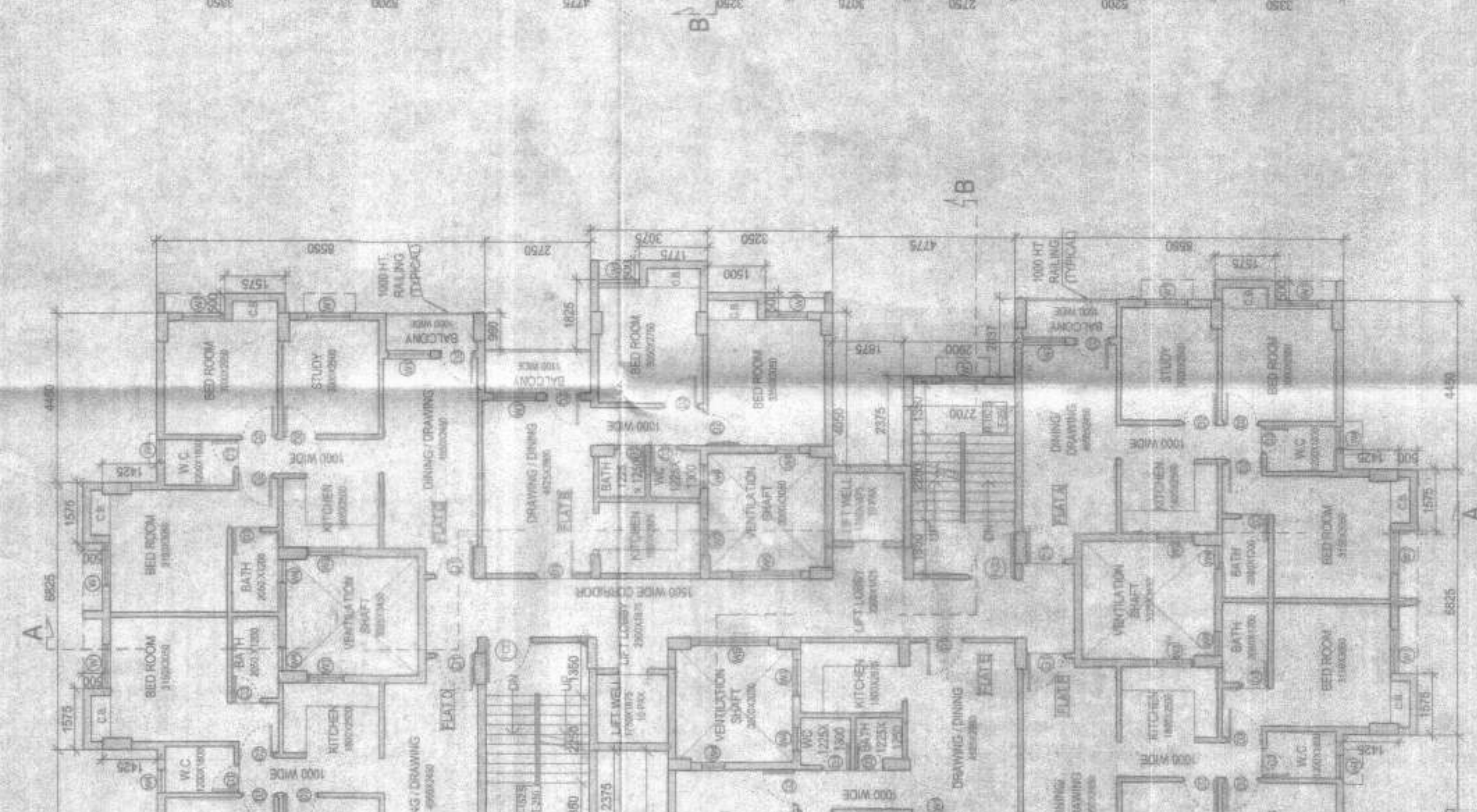
FRONT ELEVATION
SCALE: 1:100



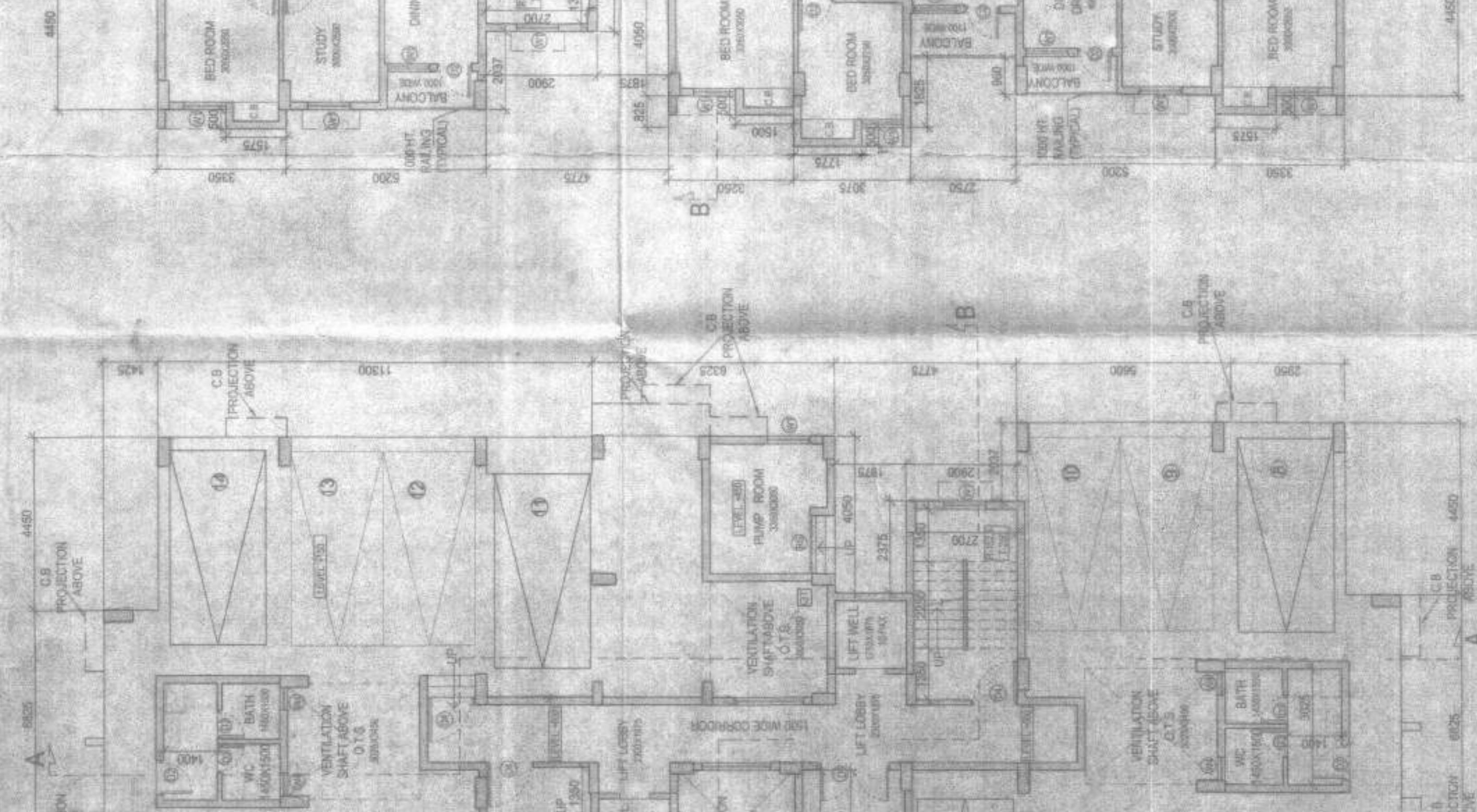
SECTION - CC
SCALE: 1:100



ROOF PLAN (WING - E)
SCALE: 1:100



TYPICAL FLOOR PLAN (WING - E)
(1ST TO 7TH FLOOR)
SCALE: 1:100



GROUND FLOOR PLAN (WING - E)
SCALE: 1:100

SCHEDULE OF DOORS & WINDOWS

DOORS	TYPE	HEIGHT	WIDTH	HEIGHT	BILL
D1	1000	2100	WT	1100	500
D2	900	2100	WT	1500	500
D3	750	2100	WT	900	1270
D4	750	2100	WT	900	500
D5	1500	2100	WT	1500	500
D6	2400	2100	WT	1500	500
D7	1200	2100	WT	1500	500

PROJECT

MAHESHWARI & ASSOCIATES
37A, BAKER ROAD, 2ND FLOOR, KOJALAKA, CHENNAI
TEL: 04228846464
WWW.MAHESHWARIANDASSOCIATES.COM

REVISIONS

NO.	DATE	BY	CHKD.	REVISION
1				
2				
3				
4				
5				
6				
7				
8				
9				
10				

ARCHITECT

MAHESHWARI & ASSOCIATES
37A, BAKER ROAD, 2ND FLOOR, KOJALAKA, CHENNAI
TEL: 04228846464
WWW.MAHESHWARIANDASSOCIATES.COM

KEY PLAN



MAHESHWARI & ASSOCIATES

37A, BAKER ROAD, 2ND FLOOR, KOJALAKA, CHENNAI

TEL: 04228846464

WWW.MAHESHWARIANDASSOCIATES.COM

MAHESHWARI & ASSOCIATES

37A, BAKER ROAD, 2ND FLOOR, KOJALAKA, CHENNAI

TEL: 04228846464

WWW.MAHESHWARIANDASSOCIATES.COM

MAHESHWARI & ASSOCIATES

37A, BAKER ROAD, 2ND FLOOR, KOJALAKA, CHENNAI

TEL: 04228846464

WWW.MAHESHWARIANDASSOCIATES.COM

MAHESHWARI & ASSOCIATES

37A, BAKER ROAD, 2ND FLOOR, KOJALAKA, CHENNAI

TEL: 04228846464

WWW.MAHESHWARIANDASSOCIATES.COM

MAHESHWARI & ASSOCIATES

37A, BAKER ROAD, 2ND FLOOR, KOJALAKA, CHENNAI

TEL: 04228846464

WWW.MAHESHWARIANDASSOCIATES.COM

MAHESHWARI & ASSOCIATES

37A, BAKER ROAD, 2ND FLOOR, KOJALAKA, CHENNAI

TEL: 04228846464

WWW.MAHESHWARIANDASSOCIATES.COM

MAHESHWARI & ASSOCIATES

37A, BAKER ROAD, 2ND FLOOR, KOJALAKA, CHENNAI

TEL: 04228846464

WWW.MAHESHWARIANDASSOCIATES.COM

MAHESHWARI & ASSOCIATES

37A, BAKER ROAD, 2ND FLOOR, KOJALAKA, CHENNAI

TEL: 04228846464

WWW.MAHESHWARIANDASSOCIATES.COM

MAHESHWARI & ASSOCIATES

37A, BAKER ROAD, 2ND FLOOR, KOJALAKA, CHENNAI

TEL: 04228846464

WWW.MAHESHWARIANDASSOCIATES.COM

MAHESHWARI & ASSOCIATES

37A, BAKER ROAD, 2ND FLOOR, KOJALAKA, CHENNAI

TEL: 04228846464

WWW.MAHESHWARIANDASSOCIATES.COM

MAHESHWARI & ASSOCIATES

37A, BAKER ROAD, 2ND FLOOR, KOJALAKA, CHENNAI

TEL: 04228846464

WWW.MAHESHWARIANDASSOCIATES.COM

MAHESHWARI & ASSOCIATES

37A, BAKER ROAD, 2ND FLOOR, KOJALAKA, CHENNAI

TEL: 04228846464

WWW.MAHESHWARIANDASSOCIATES.COM

MAHESHWARI & ASSOCIATES

451 (6-1) (Rev. 5/9)

Noted: If you intend to construct a building plan in accordance with the provisions of the Code, you must submit the following information to the Department of Health and Human Services, Division of Building Inspection, 100 North 17th Street, Raleigh, N.C. 27601.

- Before starting any construction, the site must conform with the plan submitted to the Department of Health and Human Services, Division of Building Inspection.
- All building materials necessary for construction must conform to the requirements of the Code and the Department of Health and Human Services, Division of Building Inspection.
- Necessary permits must be obtained from the Department of Health and Human Services, Division of Building Inspection.
- Construction shall be completed in accordance with the approved building plan.
- The structure to be built shall conform to the Code of Ordinances.
- Information required by the Department of Health and Human Services, Division of Building Inspection, shall be submitted to the Department of Health and Human Services, Division of Building Inspection.
- No work shall be done until the Department of Health and Human Services, Division of Building Inspection, has approved the plan.
- The construction shall be completed in accordance with the approved building plan.
- Construction of a building shall not be started until the Department of Health and Human Services, Division of Building Inspection, has approved the plan.
- Any violation of the Code shall be reported to the Department of Health and Human Services, Division of Building Inspection.

ASSISTANT ENGINEER
 STATE OF NORTH CAROLINA
 DIVISION OF BUILDING INSPECTION
 100 NORTH 17TH STREET
 RALEIGH, N.C. 27601
 PHONE: 311-2200
 FAX: 311-2201

Under this plan, the construction of a building shall conform to the Code of Ordinances, Chapter 160A, Article 1, Section 160A.01, and the Department of Health and Human Services, Division of Building Inspection, shall be responsible for the enforcement of the Code of Ordinances, Chapter 160A, Article 1, Section 160A.01, and the Department of Health and Human Services, Division of Building Inspection, shall be responsible for the enforcement of the Code of Ordinances, Chapter 160A, Article 1, Section 160A.01.

SANCTIONED

Executive Officer
 State-Approved Engineer (A-1)
 State-Approved Engineer (A-1)
 State-Approved Engineer (A-1)

CHECKED
 &
 VERIFIED

1. The Development Permit shall be issued by the Local Government, and the Department of Health and Human Services, Division of Building Inspection, shall be responsible for the enforcement of the Code of Ordinances, Chapter 160A, Article 1, Section 160A.01, and the Department of Health and Human Services, Division of Building Inspection, shall be responsible for the enforcement of the Code of Ordinances, Chapter 160A, Article 1, Section 160A.01.

2. The Department of Health and Human Services, Division of Building Inspection, shall be responsible for the enforcement of the Code of Ordinances, Chapter 160A, Article 1, Section 160A.01, and the Department of Health and Human Services, Division of Building Inspection, shall be responsible for the enforcement of the Code of Ordinances, Chapter 160A, Article 1, Section 160A.01.

3. The Department of Health and Human Services, Division of Building Inspection, shall be responsible for the enforcement of the Code of Ordinances, Chapter 160A, Article 1, Section 160A.01, and the Department of Health and Human Services, Division of Building Inspection, shall be responsible for the enforcement of the Code of Ordinances, Chapter 160A, Article 1, Section 160A.01.

4. All legal requirements, conditions, and other applicable provisions shall be enforced by the Department of Health and Human Services, Division of Building Inspection, and the Department of Health and Human Services, Division of Building Inspection, shall be responsible for the enforcement of the Code of Ordinances, Chapter 160A, Article 1, Section 160A.01, and the Department of Health and Human Services, Division of Building Inspection, shall be responsible for the enforcement of the Code of Ordinances, Chapter 160A, Article 1, Section 160A.01.

ASSISTANT ENGINEER
 STATE OF NORTH CAROLINA
 DIVISION OF BUILDING INSPECTION
 100 NORTH 17TH STREET
 RALEIGH, N.C. 27601
 PHONE: 311-2200
 FAX: 311-2201

By: *[Signature]*
 Director of Building Inspection
 State-Approved Engineer (A-1)
 State-Approved Engineer (A-1)