



SECTION OF WINDOW (1/8" = 1'-0")



SECTION OF DOOR (1/8" = 1'-0")

DETAIL SPECIFICATION OF FINISHES

1. All finishes shall be in accordance with the specifications of the Architect.
2. All finishes shall be in accordance with the specifications of the Architect.
3. All finishes shall be in accordance with the specifications of the Architect.
4. All finishes shall be in accordance with the specifications of the Architect.

SCHEDULE OF DOORS

NO.	DESCRIPTION	QTY.	UNIT
1
2
3
4
5
6
7
8
9
10

SCHEDULE OF WINDOWS

NO.	DESCRIPTION	QTY.	UNIT
1
2
3
4
5
6
7
8
9
10

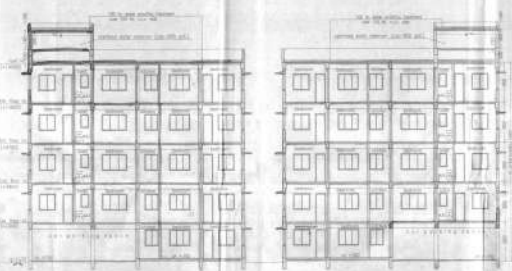
PROPOSED GYM STORED RECREATIONAL BUILDING PLAN
OF PHARMA AREA PHASE II
IN THE GEORGE SEABRIDGE SAC NO. 188170 (1975)
TOWNSHIP PHARMA NO. 43-46 20' 00" BY 44' 00" NORTH
WIDE, PHARMA, CO. CO. 20, WITH AGRICULTURE
ZONING ORDINANCE, P. 1 - 8/14/75, UNDER SOUTH 24
1/2 SECTION 34

AREA STATEMENT

DATE: 11/11/75
DRAWN BY: [Signature]
CHECKED BY: [Signature]
APPROVED BY: [Signature]
SCALE: AS SHOWN



WEST ELEVATION (1/8" = 1'-0")



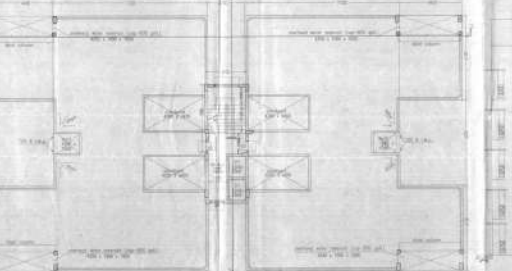
EAST ELEVATION (1/8" = 1'-0")



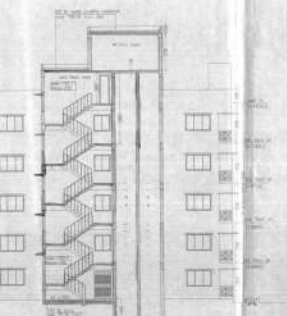
SECTION OF WINDOW (1/8" = 1'-0")



FIRST FLOOR PLAN (1/8" = 1'-0")



SECOND FLOOR PLAN (1/8" = 1'-0")



SOUTH ELEVATION (1/8" = 1'-0")

APPROVED FOR THE CITY OF PHARMA
DATE: 11/11/75
BY: [Signature]



CITY OF PHARMA

DETAILS OF BLOCK 100 - (B, (H), (I) & (J))