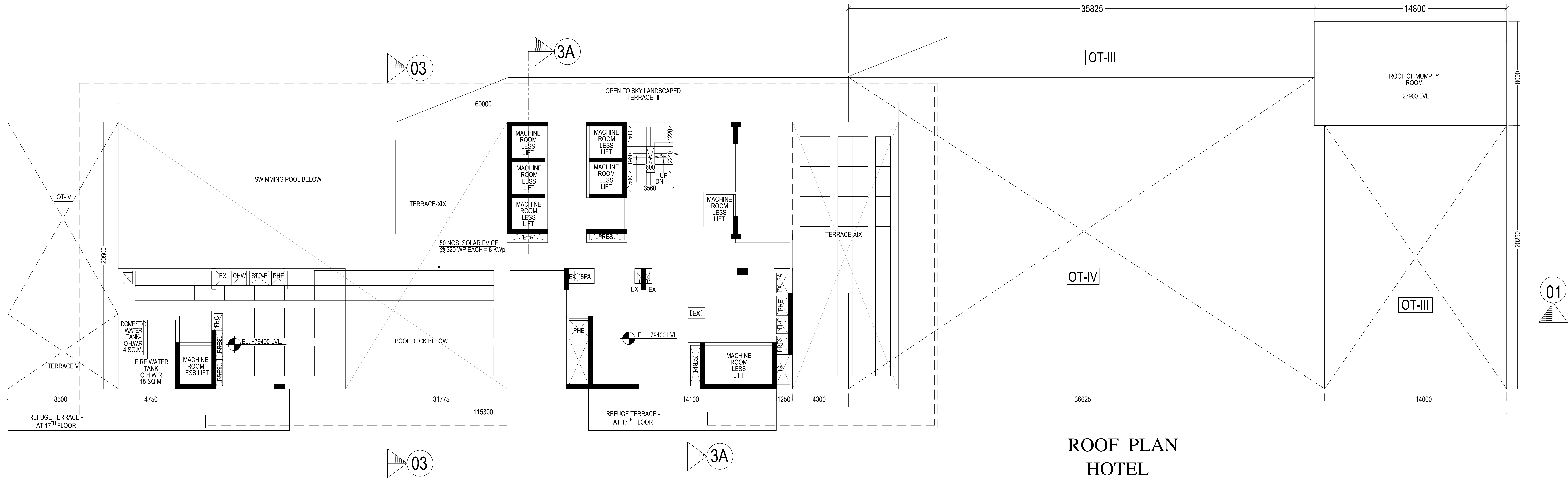


UNIT	SYMBOL	DESCRIPTION	QTY	TOTAL
1	500W	SOLAR PLATE	8000	40000



ROOF PLAN
HOTEL

NOTES AND SPECIFICATIONS
1. ALL DIMENSIONS ARE IN MM. UNLESS OTHERWISE NOTED.
2. PROJECTION OF CHAJJA & CORNICE IS 500 MM.
3. ALL OTHER SPECIFICATION AS PER IS CODE OR N.B.C.
4. 10MM THK. PLASTER TO OUTER WALLS AND 12MM THK. PLASTER TO INNER WALLS AND 6MM THK. PLASTER TO CEILING.
5. EXTERNAL WALLS ARE 200 MM THK. AND ALL INTERNAL WALLS ARE 125 MM THK. UNLESS OTHERWISE MENTIONED IN THE DRAWING.
6. THE DEPTH OF U.G.W.R. DOES NOT EXCEED THE DEPTH OF NEARBY BUILDING FOUNDATION.
7. THIS DRAWING IS A PROPERTY OF ARCHITECTONIC SERVICES AND IT SHOULD NOT BE COPIED OR REPRODUCED WITHOUT WRITTEN CONSENT OF THE FIRM.
CERTIFICATE OF THE ARCHITECT
THIS IS TO CERTIFY THAT THE BUILDING PLAN HAS BEEN DRAWN AS PER THE PROVISIONS OF K.M.C. BUILDING RULE 2009 AS AMENDED FROM TIME TO TIME. ABUTTING K.M.C. ROAD CONFORMS WITH THE PLAN & THAT IT IS A BUILDABLE SITE.

NAME OF ARCHITECT
SUBALA MONDAL (C.A/2018/94075)

DECLARATION OF GEO TECHNICAL ENGINEER:
UNDERSIGNED HAS INSPECTED THE SITE AND CARRIED OUT SOIL INVESTIGATION THEREON. IT IS CERTIFIED THAT THE EXISTING SOIL OF THE SITE IS ABLE TO CARRY THE LOAD COMING FROM THE PROPOSED CONSTRUCTION AND THE FOUNDATION SYSTEM PROPOSED HEREIN IS SAFE AND STABLE IN ALL RESPECT FROM GEO TECHNICAL POINT OF VIEW.

NAME OF THE GEOTECHNICAL ENGINEER
ALOK ROY (G.T/111)

DECLARATION OF STRUCTURAL REVIEWER:
THE STRUCTURAL DESIGN OF BOTH FOUNDATION AND SUPERSTRUCTURE OF THE BUILDING HAVE BEEN MADE BY ME CONSIDERING ALL POSSIBLE LOADS INCLUDING THE SEISMIC LOAD AS PER N.B.C. OF INDIA AND CERTIFY THAT IT IS SAFE AND STABLE IN ALL RESPECT. SOIL INVESTIGATION REPORT HAS BEEN DONE BY ALOK ROY (PANELLED NO. G.T/111). THE RECOMMENDATION OF SOIL REPORT HAS BEEN CONSIDERED DURING STRUCTURAL CALCULATION.

NAME OF THE STRUCTURAL REVIEWER
UTPAL SANTRA (ESR/58/10)

DECLARATION OF STRUCTURAL ENGINEER:
THE STRUCTURAL DESIGN & DRAWING OF BOTH FOUNDATION & SUPERSTRUCTURE OF THE BUILDING HAS BEEN MADE BY ME CONSIDERING ALL POSSIBLE LOADS INCLUDING SEISMIC LOAD AS PER THE NATIONAL BUILDING CODE OF INDIA & CERTIFIED THAT IT IS SAFE & STABLE IN ALL RESPECT. THE RECOMMENDATIONS OF SOIL TEST REPORT HAS BEEN CONSIDERED DURING STRUCTURAL CALCULATION.

NAME OF THE STRUCTURAL ENGINEER
ANKIT AGARWALA (ESE/1172)

OWNERS DECLARATION:
1. I, SHALL ENGAGE ARCHITECT AND E.S.E. DURING CONSTRUCTION.
2. I SHALL FOLLOW THE INSTRUCTIONS OF ARCHITECT AND E.S.E. DURING CONSTRUCTION OF THE BUILDING.
3. K.M.C. AUTHORITY WILL NOT BE RESPONSIBLE FOR STRUCTURE STABILITY OF BUILDING AND ADJOINING STRUCTURE.
4. IF ANY SUBMITTED DOCUMENT IS FOUND TO BE FAKE THE K.M.C. AUTHORITY MAY REVOKE THE SANCTION PLAN.
5. THE CONSTITUTION OF WATER RESERVOIR AND SEPTIC TANK EXECUTED UNDER THE GUIDANCE OF ARCHITECT & E.S.E.
6. ALL EXISTING STRUCTURE TO BE DEMOLISHED BEFORE NEW CONSTRUCTION FULLY OCCUPIED BY OWNER & THERE IS NO TENANT.

NAME OF THE OWNER/APPLICANT
APEEJAY SURRENDRA PARK HOTELS LTD (LESSEE)

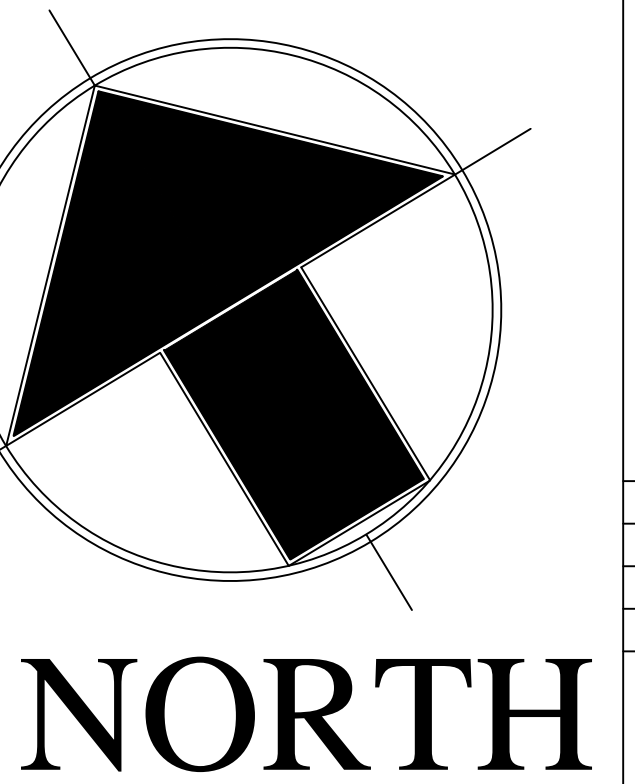
BUILDING PERMIT NO.: 2025070110
DATE: 06.11.2025
VALID UP TO: 05.11.2030

DIGITAL SIGNATURE OF A.E.
DIGITAL SIGNATURE OF E.E.

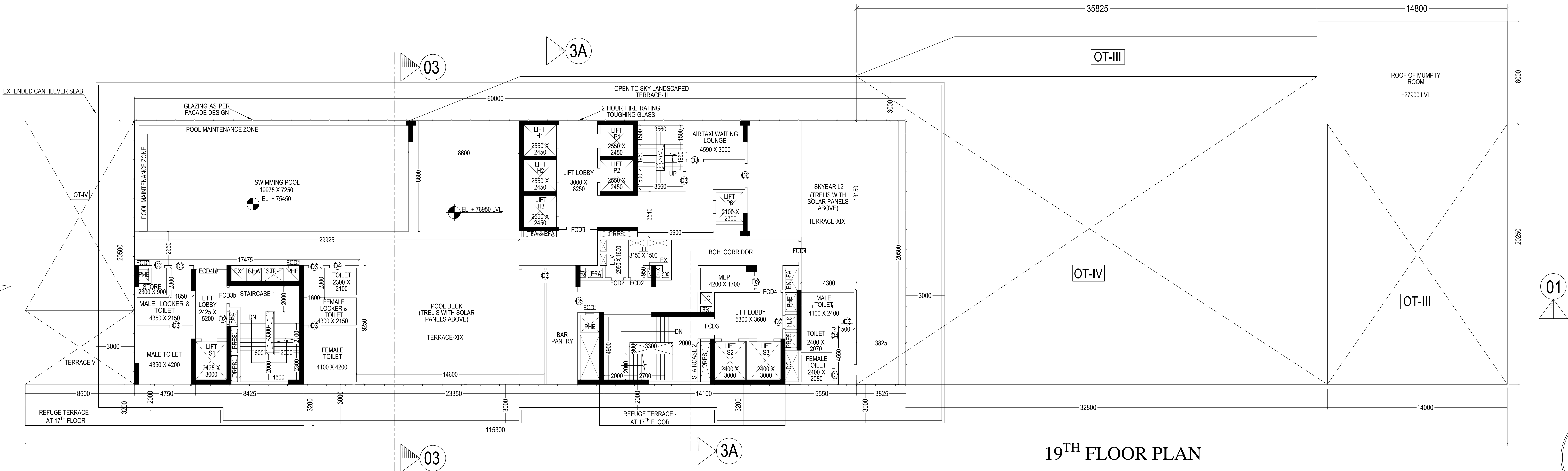
SHEET TITLE: HOTEL
• 19TH FLOOR PLAN
• ROOF PLAN

PROJECT DETAILS:
PLAN SHOWING PROPOSED 2B+G+19 STOREY (80.0M.) ASSEMBLY BUILDING (HOTEL), WITH 2B+G+20 STOREY (72.9 M.) SERVICE APARTMENT, U/S 393A OF KMC ACT 1980 & KMC BUILDING RULE 2009 AT PREMISES NO. 990, EASTERN METROPOLITAN BYPASS, KOLKATA - 700046, WARD - 58, BOROUGH - VII.

DATE: 17/10/2025
SCALE: 1:200
DWG. NO.: CTC/AHUC/L & ASPH/L/174M/1
SHEET NO.: 19 OF 26



NORTH



19TH FLOOR PLAN
HOTEL

NOTE : ALL STAIRS, LIFT WELL & LIFT LOBBIES ARE PRESSURIZED EXCEPT LIFT PL-03, PL-04 AND LEVITATOR

ROOM NO.	AREA	HEIGHT	SOIL HEIGHT
001	800.000	2100.000	300.000
002	800.000	2400.000	300.000
003	800.000	2400.000	300.000
004	800.000	2400.000	300.000
005	800.000	2400.000	300.000
006	800.000	2400.000	300.000
007	800.000	2400.000	300.000
008	800.000	2400.000	300.000
009	800.000	2400.000	300.000
010	800.000	2400.000	300.000
011	800.000	2400.000	300.000
012	800.000	2400.000	300.000
013	800.000	2400.000	300.000
014	800.000	2400.000	300.000
015	800.000	2400.000	300.000
016	800.000	2400.000	300.000
017	800.000	2400.000	300.000
018	800.000	2400.000	300.000
019	800.000	2400.000	300.000
020	800.000	2400.000	300.000
021	800.000	2400.000	300.000
022	800.000	2400.000	300.000
023	800.000	2400.000	300.000
024	800.000	2400.000	300.000
025	800.000	2400.000	300.000
026	800.000	2400.000	300.000
027	800.000	2400.000	300.000
028	800.000	2400.000	300.000
029	800.000	2400.000	300.000
030	800.000	2400.000	300.000
031	800.000	2400.000	300.000
032	800.000	2400.000	300.000
033	800.000	2400.000	300.000
034	800.000	2400.000	300.000
035	800.000	2400.000	300.000
036	800.000	2400.000	300.000
037	800.000	2400.000	300.000
038	800.000	2400.000	300.000
039	800.000	2400.000	300.000
040	800.000	2400.000	300.000
041	800.000	2400.000	300.000
042	800.000	2400.000	300.000
043	800.000	2400.000	300.000
044	800.000	2400.000	300.000
045	800.000	2400.000	300.000
046	800.000	2400.000	300.000
047	800.000	2400.000	300.000
048	800.000	2400.000	300.000
049	800.000	2400.000	300.000
050	800.000	2400.000	300.000
051	800.000	2400.000	300.000
052	800.000	2400.000	300.000
053	800.000	2400.000	300.000
054	800.000	2400.000	300.000
055	800.000	2400.000	300.000
056	800.000	2400.000	300.000
057	800.000	2400.000	300.000
058	800.000	2400.000	300.000
059	800.000	2400.000	300.000
060	800.000	2400.000	300.000
061	800.000	2400.000	300.000
062	800.000	2400.000	300.000
063	800.000	2400.000	300.000
064	800.000	2400.000	300.000
065	800.000	2400.000	300.000
066	800.000	2400.000	300.000
067	800.000	2400.000	300.000
068	800.000	2400.000	300.000
069	800.000	2400.000	300.000
070	800.000	2400.000	300.000
071	800.000	2400.000	300.000
072	800.000	2400.000	300.000
073	800.000	2400.000	300.000
074	800.000	2400.000	300.000
075	800.000	2400.000	300.000
076	800.000	2400.000	300.000
077	800.000	2400.000	300.000
078	800.000	2400.000	300.000
079	800.000	2400.000	300.000
080	800.000	2400.000	300.000
081	800.000	2400.000	300.000
082	800.000	2400.000	300.000
083	800.000	2400.000	300.000
084	800.000	2400.000	300.000
085	800.000	2400.000	300.000
086	800.000	2400.000	300.000
087	800.000	2400.000	300.000
088	800.000	2400.000	300.000
089	800.000	2400.000	300.000
090	800.000	2400.000	300.000
091	800.000	2400.000	300.000
092	800.000	2400.000	300.000
093	800.000	2400.000	300.000
094	800.000	2400.000	300.000
095	800.000	2400.000	300.000
096	800.000	2400.000	300.000
097	800.000	2400.000	300.000
098	800.000	2400.000	300.000
099	800.000	2400.000	300.000
100	800.000	2400.000	300.000