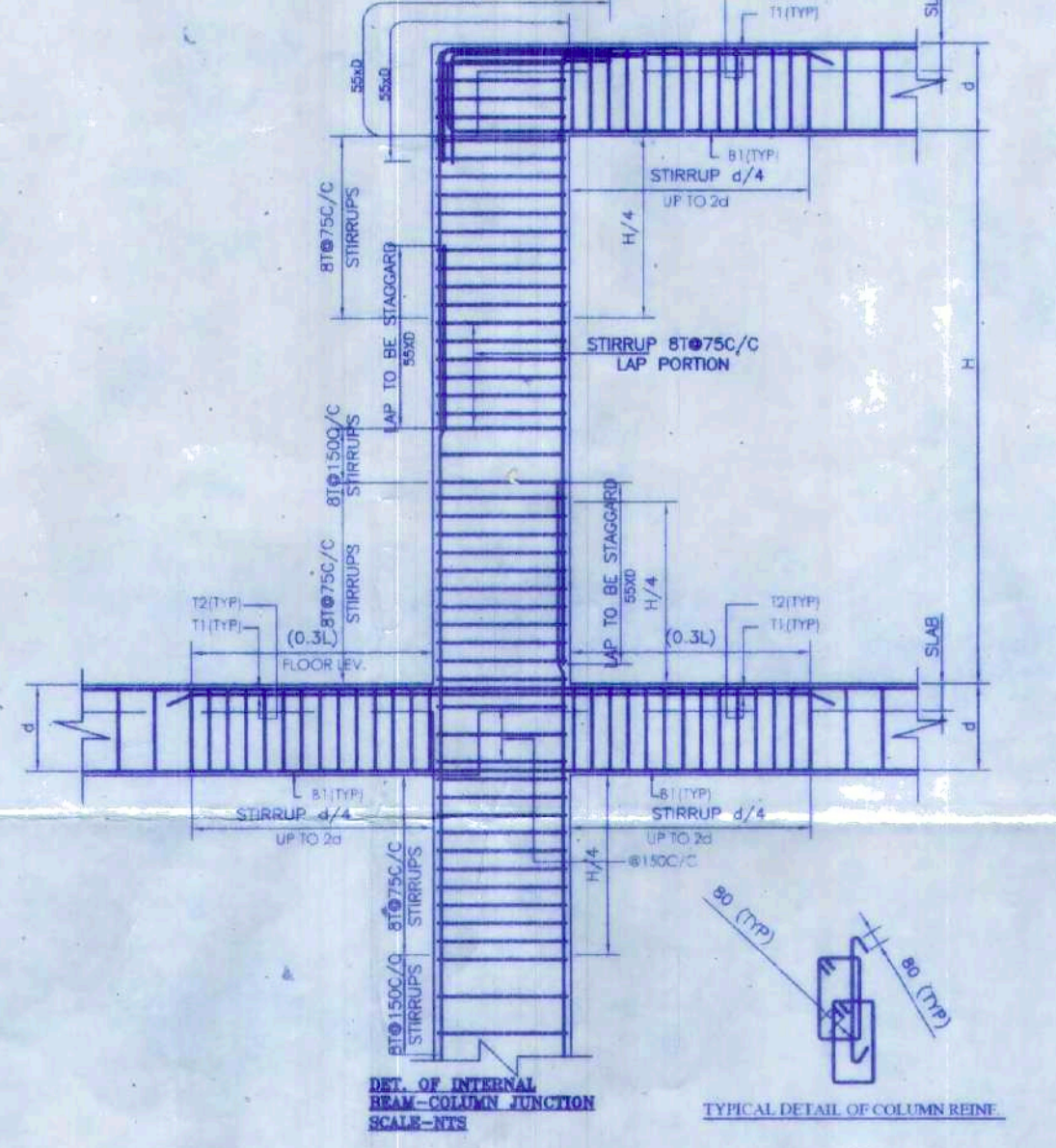
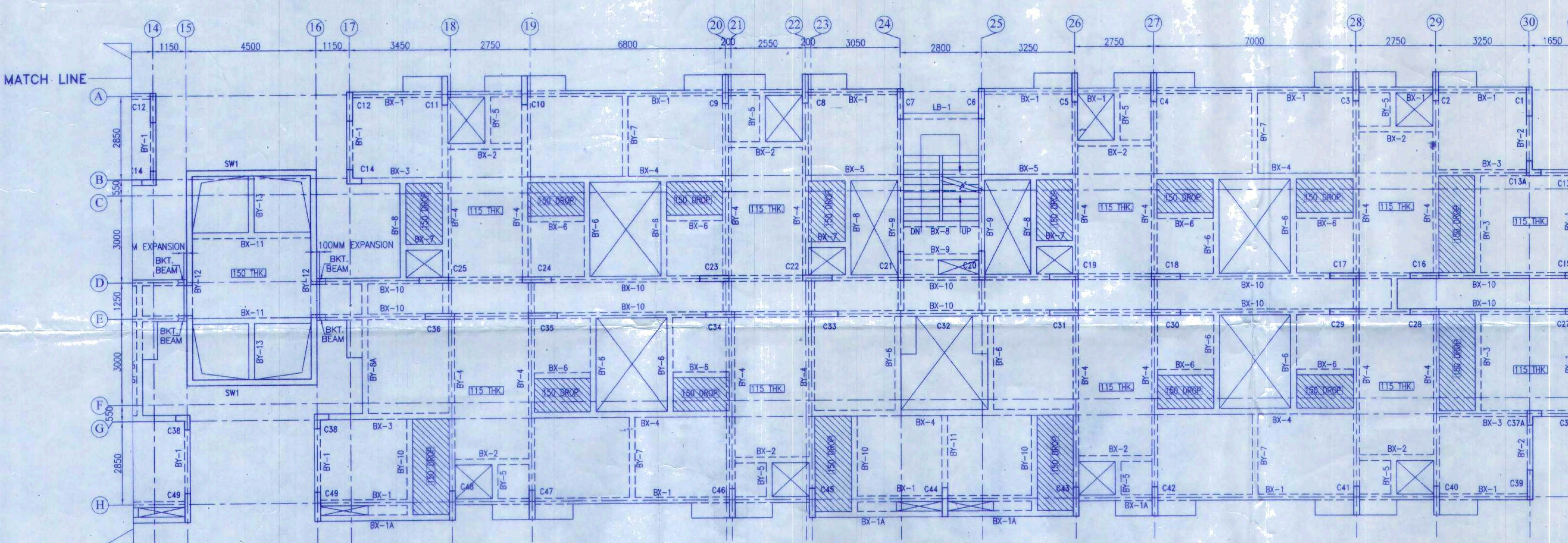


**FLOOR SLAB SCHEDULE:-**

SLAB THK.	SHORTER SPAN		LONGER SPAN	
	SUPPORT TOP	MID SPAN BOTTOM	SUPPORT TOP	MID SPAN BOTTOM
100	8 T @ 150 C/C	8 T @ 200 C/C	8 T @ 150 C/C	8 T @ 200 C/C
115	8 T @ 150 C/C	8 T @ 175 C/C	8 T @ 150 C/C	8 T @ 200 C/C
150	10 T @ 150 C/C	10 T @ 150 C/C	10 T @ 150 C/C	10 T @ 150 C/C



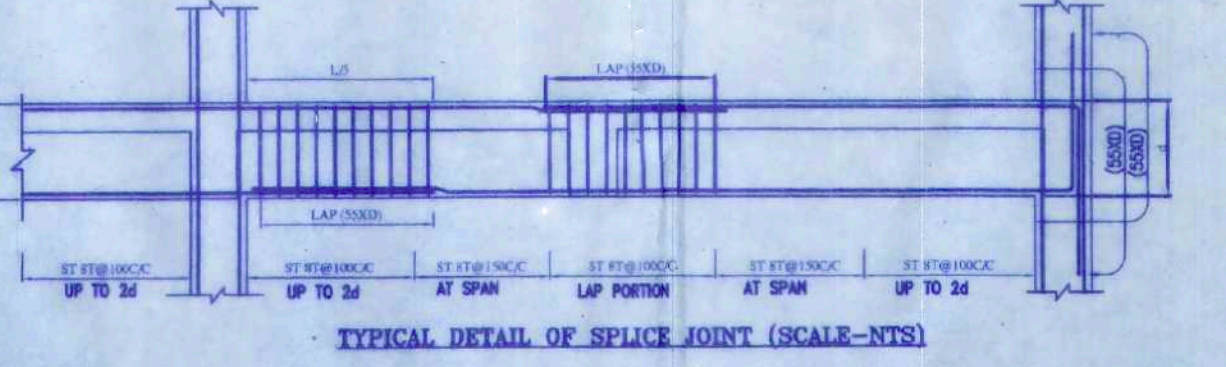
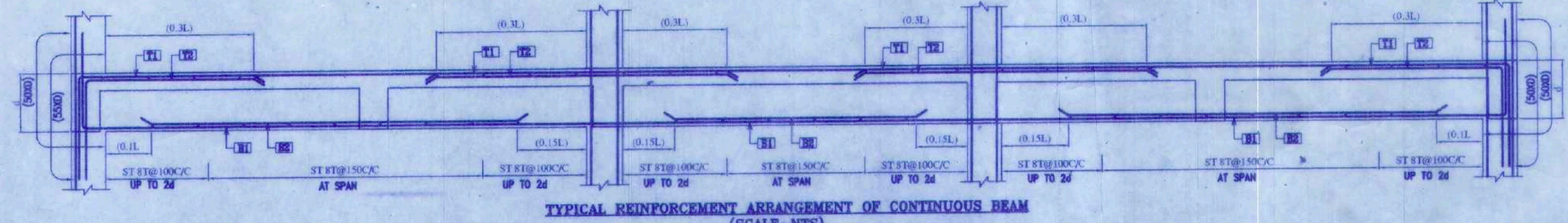
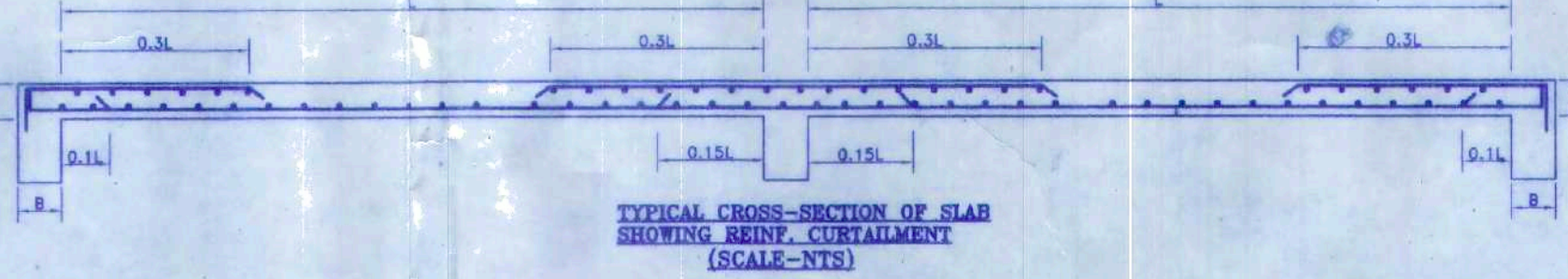
G.A OF TYPICAL FLOOR LEVEL  
UNLESS OTHERWISE MENTION ALL SLAB THICKNESS 100MM

**TYPICAL FLOOR BEAM SCHEDULE:-**

BEAM MKD.	BEAM SIZE	SUPPORT REINFORCEMENT			SPAN REINFORCEMENT		
		TOP	BOTTOM	STIRRUPS	TOP	BOTTOM	STIRRUPS
BX-1	200X900/600	3-20T+3-16T	3-20T	2L-8T@115 C/C	2-20T	3-20T+3-16T	2L-8T@200 C/C
BX-1A	200X900	3-20T+3-16T	3-20T	2L-8T@115 C/C	2-20T	3-20T+3-16T	2L-8T@200 C/C
BX-2	200X400	2-16T	3-16T	2L-8T@115 C/C	2-16T	3-16T	2L-8T@200 C/C
BX-3	200X600	3-20T	3-20T	2L-8T@115 C/C	2-20T	3-20T	2L-8T@200 C/C
BX-4	200X600	2-20T	3-20T	2L-8T@115 C/C	2-20T	3-20T	2L-8T@200 C/C
BX-5	200X400	3-20T	3-20T	2L-8T@115 C/C	2-20T	3-20T	2L-8T@200 C/C
BX-6	200X400	2-16T	3-20T	2L-8T@115 C/C	2-16T	3-20T	2L-8T@200 C/C
BX-7	200X400	2-16T	3-20T	2L-8T@115 C/C	2-16T	3-20T	2L-8T@200 C/C
BX-8	200X400	2-20T	3-20T	2L-8T@115 C/C	2-20T	3-20T	2L-8T@200 C/C
BX-9	200X600	3-20T	3-20T	2L-8T@115 C/C	2-20T	3-20T	2L-8T@200 C/C
BX-10	200X600	3-20T+3-16T	3-20T	2L-8T@115 C/C	2-20T	3-20T+3-16T	2L-8T@200 C/C
BX-11	200X600	3-20T+3-16T	3-20T	2L-8T@115 C/C	2-20T	3-20T+3-16T	2L-8T@200 C/C
LB	200X600	3-20T	3-20T	2L-8T@115 C/C	2-20T	3-20T	2L-8T@200 C/C

**TYPICAL FLOOR BEAM SCHEDULE:-**

BEAM MKD.	BEAM SIZE	SUPPORT REINFORCEMENT			SPAN REINFORCEMENT		
		TOP	BOTTOM	STIRRUPS	TOP	BOTTOM	STIRRUPS
BY-1	200X900	3-20T+3-16T	3-20T	2L-8T@115 C/C	2-20T	3-20T+3-16T	2L-8T@200 C/C
BY-2	200X900	3-20T	3-20T	2L-8T@115 C/C	2-20T	3-20T	2L-8T@200 C/C
BY-3	200X400	2-20T	3-20T	2L-8T@115 C/C	2-20T	3-20T	2L-8T@200 C/C
BY-4	200X600	3-20T+3-16T	3-20T	2L-8T@115 C/C	2-20T	3-20T+3-16T	2L-8T@200 C/C
BY-5	200X400	2-16T	3-16T	2L-8T@115 C/C	2-16T	3-16T	2L-8T@200 C/C
BY-6	200X400	2-20T	3-20T	2L-8T@115 C/C	2-20T	3-20T	2L-8T@200 C/C
BY-7	200X400	2-20T	3-20T	2L-8T@115 C/C	2-20T	3-20T	2L-8T@200 C/C
BY-8	200X400	2-20T	3-20T	2L-8T@115 C/C	2-20T	3-20T	2L-8T@200 C/C
BY-9	200X600	3-20T+3-16T	3-20T	2L-8T@115 C/C	2-20T	3-20T+3-16T	2L-8T@200 C/C
BY-10	200X400	3-20T	3-20T	2L-8T@115 C/C	2-20T	3-20T	2L-8T@200 C/C
BY-11	200X600	3-20T	3-20T	2L-8T@115 C/C	2-20T	3-20T	2L-8T@200 C/C
BY-12	200X600	3-20T+3-16T	3-20T	2L-8T@115 C/C	2-20T	3-20T+3-16T	2L-8T@200 C/C
BY-13	200X400	3-20T	3-20T	2L-8T@115 C/C	2-20T	3-20T	2L-8T@200 C/C



PROPOSED AFFORDABLE HOUSING UNDER PRADHAN MANTRI AWAS YOJANA AT PRE. NO.39/1 SHALIMAR ROAD, MUOZA SHIBPUR SHEET NO.169,170,179,180, I.L NO. 1, 1, L.R. KHATIAN NO. 170,9,15,17, L.R. DAG NO. 12,13,39,40,41,42,44,45,60,61,62,63,6,7,8,9,10,11, 12,13,14,15,16,17,21,22,24,1,2,11 P.S-SHIBPUR, WARD NO-39, BOROUGH -VIDIST HOWRAH-711103, UNDER HOWRAH MUNICIPAL CORPORATION, WEST BENGAL.

TITLE:  
G.A OF TYPICAL FLOOR (TOWER-8)

NOTES:  
1. ALL DIMENSIONS ARE IN MM EXCEPT NOTED  
2. GRADE OF CONCRETE - M40 M25  
3. GRADE OF STEEL Fe500D

PROVISION:  
1. 1ST CLASS CEMENT BRICK WORK IN SUPERSTRUCTURE  
2. 200 THK. EXT. BRICK WALL & 100 THK. INT. BRICK WALL IN 1:4 CEM SAND MORTAR  
3. LEAN CONG. (1:3) WITH 15 MM DOWN GRADED STONE CHIPS FOR ALL P.C.C. WORKS  
4. M25 CONG. 1:2 FOR ALL R.C.C. WORKS  
5. 20MM & 12MM THK. PLASTER (1:5) ON EXT. & INT. BRICK WALL RESPECTIVE & 15MM THK. PLASTER (1:3) ON CEILING  
6. 25 X 25 PLAT ORNAMENTAL GRILL WITH WINDOW FRAME 50 X 40 MM THK. MARBLE FLOORING INCLUDING SINKING OVER R.C.C. FLOOR SLAB  
7. SINGLE LAYER F.B.S IN FOUNDATION & PLINTH  
8. HIRE LABOUR FOR SHUTTERING & LABOUR WORKS INCLUDING STOUT PROPS TO BE PLACED AS PER DIRECTION  
9. TOP STEEL BARS FOR ALL R.C.C. WORKS INCLUDING DISTRIBUTORS & BINDERS  
10. SANITARY & PLUMBING FITTINGS & FIXING COMPLETE AS PER RATE  
11. MATERIALS TO BE USED: CEMENT- PORTLAND, SAND- MEDIUM COURSE  
12. STONE CHIPS- 15 MM DOWN GRADED  
13. CLEAR COVER TO MAIN REIN. FOUNDATION- 50 MM, COLUMN- 40 MM, BEAM- 25 MM, SLAB- 30 MM  
14. S&L WOOD TO BE USED FOR DOOR & WINDOW FRAME & TEAK WOOD FOR SHUTTERS  
15. ALL DIMENSIONS ARE IN MM UNLESS OTHERWISE MENTIONED & WRITTEN DIMENSIONS WILL SUPERSEDE MEASURED DIMENSIONS

DECLARATION  
THE PLOT BELONGS TO BOROUGH BY BOUNDARY WALL. THE CHARACTER OF THE ROAD IS A H.M.C. ROAD. I DO HEREBY DECLARE WITH FULL RESPONSIBILITY THAT THE BUILDING PLAN HAS BEEN DRAWN BY ME AS PER PROVISION OF K.M.C. BUILDING RULES 2000 AS EXTENDED MUTATIONS MUTATIONS TO H.M.C. AND THE SITE CONVENTION INCLUDING THE WIDTH OF THE ABUTTING ROAD CONFORM WITH THE SITE PLAN AND THAT IS BUILDABLE.

FOR IDEAL RIVERVIEW PROJECTS PRIVATE LIMITED  
35A, Dr. Sarat Banerjee Road  
Kolkata - 700 029  
Director

DECLARATION  
I HEREBY DECLARE THAT THE SUPER STRUCTURE OF THE BUILDING HAS BEEN DESIGNED BY ME THAT IT IS SAFE IN ALL RESPECT INCLUDING IN THE CONSIDERATION OF THE BEARING CAPACITY & SETTLEMENT OF SOIL.  
THE STRUCTURE IS DESIGNED IN ACCORDANCE WITH THE PROVISIONS OF H.M.C. BUILDING RULES 2000 AS EXTENDED MUTATIONS TO H.M.C. AND THE SITE CONVENTION INCLUDING THE WIDTH OF THE ABUTTING ROAD CONFORM WITH THE SITE PLAN AND THAT IS BUILDABLE.

BIBIK BIKASH MULLICK  
E.S.E. - 1/75 H.M.C./E.S.E./1-39  
KOLKATA MUNICIPAL CORPORATION  
RMC Empowered Structural Engineer, Class-I, E.S.E. (I) 1/75

UNDERTAKING  
1. I WILL UNDERTAKE THAT WHEN THE SEWER LINE WILL BE AVAILABLE, I WILL TAKE CONNECTION AT MY OWN COST & AS PER RULE.  
2. NO BUILDING MATERIALS WILL BE STACKED/DEPOSITED ON ROAD OVERNIGHT.  
3. I WILL ARRANGE FOR FURNING & MAINTENANCE OF TREE AS SHOWN IN THE DRAWING AT MY OWN COST.

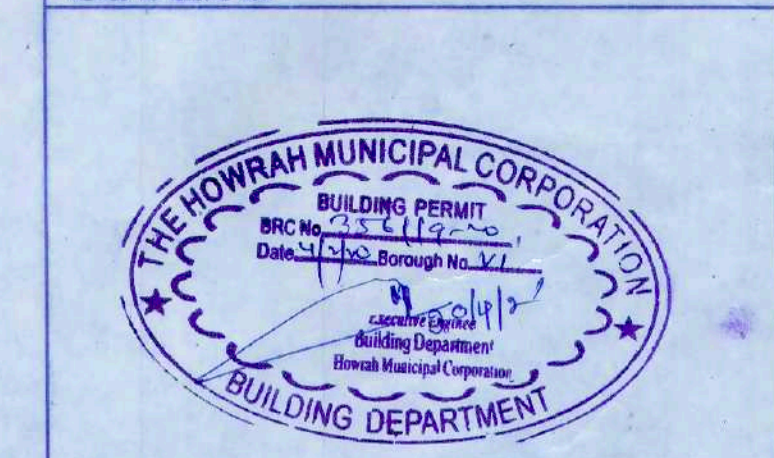
ALOK ROY  
Empowered Geotechnical Engineer  
Kolkata Municipal Corporation  
Class-I, E.S.E. (I) 1/75  
6A, Nilan Park  
Kolkata-700 054

H.M.C./G.T.E./LICNO.3

STRUCTURAL CONSULTANT:  
P.M. CONSULTANT  
STRUCTURAL ENGINEERING CONSULTANT  
3A, SIDDHESWAR ROAD,  
KOLKATA - 700029.  
PHONE: 9903900115

DESIGNED-BEM REF.  
CHECKED-BEM SCALE: 1:100, 1:25  
DEALT - nsj DATE: 05.03.2020  
DRG. NO- PMC/MUN/ST/SHALIMAR/TOWER-8/02

ADDRESS:  
35A, DR. SARAT BANERJEE ROAD,  
KOLKATA 700 029  
PHONE: 9903900115



SPACE FOR H.M.C.

### PARTY'S COPY

Structural plan and design calculation as submitted by the structural engineer have been kept with B.P. No. 233/12.2.20. Date 4/7/20 for record of the Howrah Municipal Corporation without verification. No deviation from the submitted structural plan should be made at the time of erection without submitting fresh structural plan along with design calculation and stability certificate in the prescribed form, necessary steps should be taken for the safety of the adjoining premises public and private properties and safety of Human Life during construction.

*[Signature]*  
 Executive Engineer  
 Building Department  
 Howrah Municipal Corporation

APPROVED AS PER ORDER OF  
 COMMISSIONER Dt. 28/3/21

PLACED IN MUNICIPAL  
 BUILDING COMMITTEE  
 DATED 26/1/20

ROJAYA MUNICIPAL CORPORATION  
 P.O. BOX 1172 HOWRAH  
 WEST BENGAL INDIA